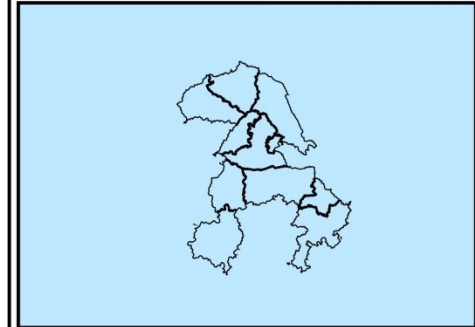
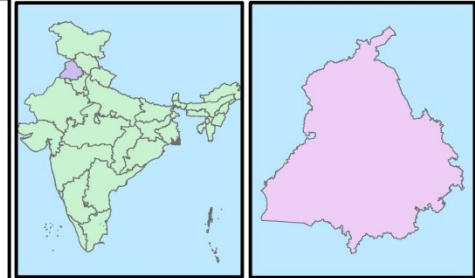
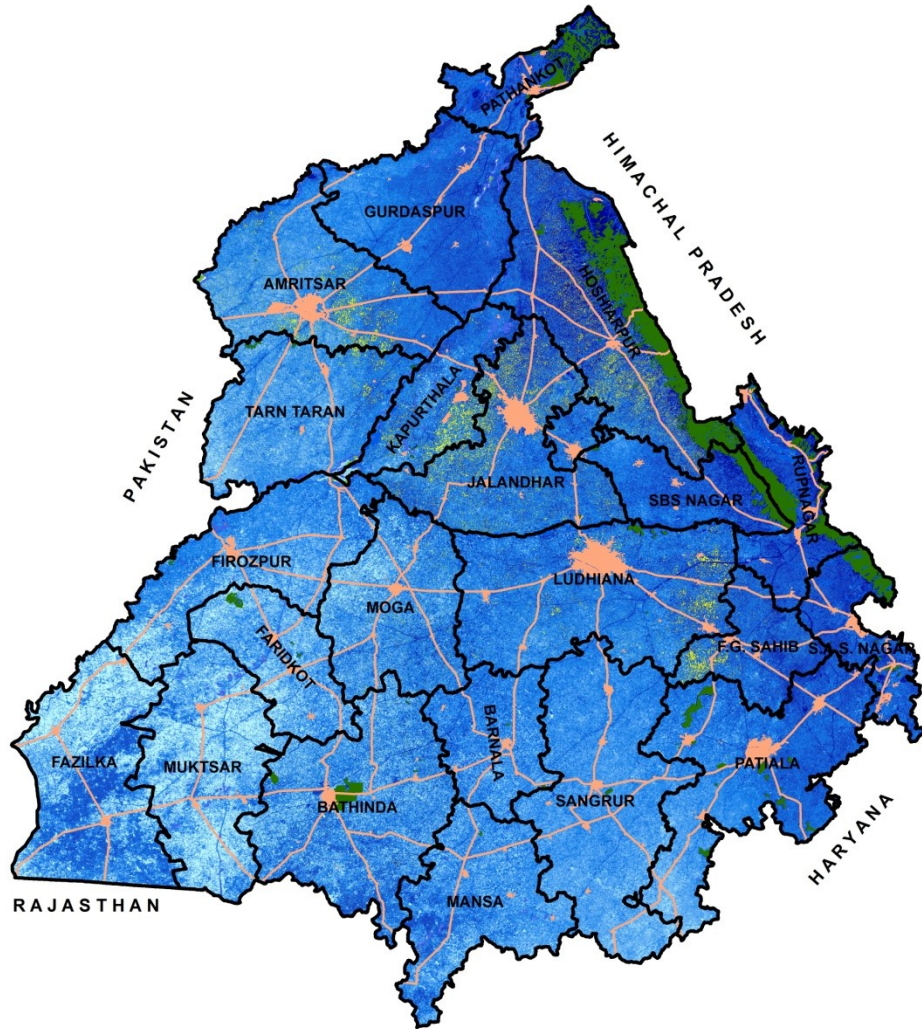


## Acreage Estimation of Potato 2020-21(Punjab)



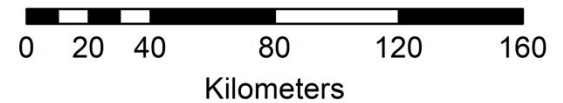
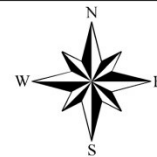
Map Prepared through digital interpretation of multi date, multi sensor and multi spectral data by Punjab Remote Sensing Centre, Ludhiana.

**Legend**

- Potato (97.57 000 ha, 9 Districts)
- Forest
- Built-up
- Wetlands
- Waterbodies
- Roads
- District Boundary



Agro-Ecosystems and Crop Modeling Division  
Punjab Remote Sensing Centre, Ludhiana.



Not for legal/unspecified purpose any use without any permissions is liable to take necessary action as per rules

<b>Remote Sensing based acreage estimation under Potato in major potato growing Districts (000 ha)</b>		
<b>2020-21</b>		
<b>Sr. No.</b>	<b>District</b>	<b>Potato</b>
<b>1</b>	<b>Amritsar</b>	<b>9.93</b>
<b>2</b>	<b>Bathinda</b>	<b>5.34</b>
<b>3</b>	<b>Fatehgarh Sahib</b>	<b>5.09</b>
<b>4</b>	<b>Hoshiarpur</b>	<b>18.65</b>
<b>5</b>	<b>Jalandhar</b>	<b>23.71</b>
<b>6</b>	<b>Kapurthala</b>	<b>11.27</b>
<b>7</b>	<b>Ludhiana</b>	<b>12.26</b>
<b>8</b>	<b>Moga</b>	<b>5.52</b>
<b>9</b>	<b>Tarn Taran</b>	<b>5.8</b>
<b>Total of nine Districts</b>		<b>97.57</b>
<b>Extrapolated to the State*</b>		<b>106.14</b>

*\* Extrapolation is based on the average values for acreage under Potato during the last three years*